

# International Study Centre Prospectus

A real business and  
professional experience  
in the heart of London



**Coventry**  
University  
London Campus

# Contents

Welcome	03
Why Choose Us?	04
Studying at Coventry University London Campus	06
Living in London	08
Student Life	10
Accommodation	11
Student Support	11
International Study Centre	12
Programmes	14
How to Apply	16

This prospectus is a guide to the Coventry University London Campus **International Study Centre**

We provide **specialist** degree **preparation** for **international students**





# Welcome

## Take your first step towards career success

Degrees at Coventry University London Campus are aimed at high achieving and motivated students who are looking for a prestigious academic degree from a top 30 UK university (*Guardian University Guide 2015*).

Located in the City of London, a global business and financial centre, Coventry University London Campus provides excellent work-based learning opportunities in global organisations and networking events with industry leaders.

The University's expertise in global business, accounting, finance, hospitality and tourism; in-depth understanding of industry requirements and close relationships with employers have informed a curriculum that is up-to-date and based on creating graduates with real employability skills.

Programmes at Coventry University London Campus are lively, interactive and relevant to the international business world. From innovative teaching and learning methods, to informal meeting spaces and social areas, Coventry University London Campus has been designed so that students can meet and collaborate.



# Why Choose Us?

## Top recognition



When joining Coventry University London Campus, you can be confident that you are joining a globally recognised quality institution.

At Coventry University London Campus, we take an internationally-orientated perspective and our modules reflect the changing nature of the global marketplace. Our unique range of international programmes will provide you the skills and knowledge required to operate across national and cultural boundaries and work successfully in the organisations of the future.

Coventry University has been chosen as the Modern University of the Year for two years running (*The Times* and *The Sunday Times Good University Guide 2014* and *2015*). The University is consistently delivering quality across a number of key areas such as student satisfaction, research quality, graduate job prospects, degree results achieved, and student-staff ratio.



**I chose Coventry University London Campus because I wanted to be in the heart of the business world.**

Diana from Russia  
BA (Hons) Global Business Management

**91%** of **students** are **satisfied** with the teaching on their course

Source: NSS 2014

**IN THE WORLD TOP 4% OF HIGHER EDUCATION INSTITUTIONS**

Source: QS World Rankings 2013

**COVENTRY UNIVERSITY RANKED No. 27 UK UNIVERSITY**

Source: Guardian University Guide 2015

**MODERN UNIVERSITY OF THE YEAR**

Source: The Times and Sunday Times Good University Guide 2015

**No. 1** UK university for feedback satisfaction based on the National Student Survey

Source: Guardian University League Table 2015



# Studying at Coventry University London Campus

Our expertise in business, accounting, finance, hospitality and tourism and in-depth understanding of what today's employers are looking for offers students a curriculum that is based on creating career-ready, global enterprising graduates.

**Highlights of studying at Coventry University London Campus:**

- Vibrant location for study, collaboration and networking
- Guaranteed internship or work related project\*
- Curriculum infused with employability skills
- Technology-enabled teaching and learning environments
- Leadership lecture delivered by senior industry leaders
- A unique simulated trading floor, developed with financial industry leaders
- State-of-the-art Library and Learning Skills centre
- An innovative and dynamic approach to learning.

**Innovative programme delivery and industry expert tutors**

Our curriculum is reinforced with modules specifically tailored to provide you with essential employability skills. All of our programmes are infused with work-related activities and supported by our lectures with high-profile business figures.

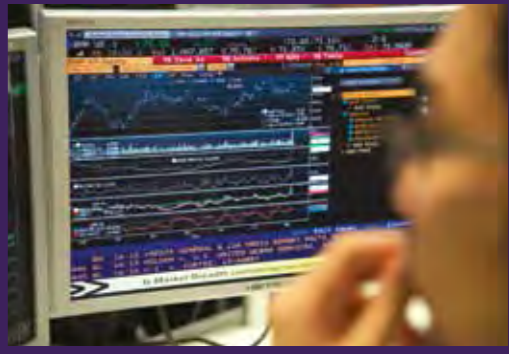
We are proud of our committed and experienced staff. Coming from over 20 countries, our tutors have a wealth of global experience from a range of industries. Using leading experts, we have created intensive and bespoke programmes that are focussed on preparing students for a successful international business career.

**Career-building**

Coventry University London Campus is the first step towards your future career. Student employability is our priority and we are committed to producing highly employable graduates. World-class learning resources ensure you can apply what you have learnt to real business issues and success in tomorrow's international business environment.

**Industry links**

At Coventry University London Campus we work closely in partnership with employers and industry to develop our programmes. This ensures that the degrees remain relevant and up-to-date and deliver the crucial skills required by employers. Our range of partners includes Jaguar Land Rover, Deloitte and Lloyds Banking Group to name but a few.



At Coventry University London Campus we work in partnership with employers and industry to develop our programmes. This ensures that the **degrees remain relevant and up-to-date**

\*Available on selected courses for students who meet eligibility requirements

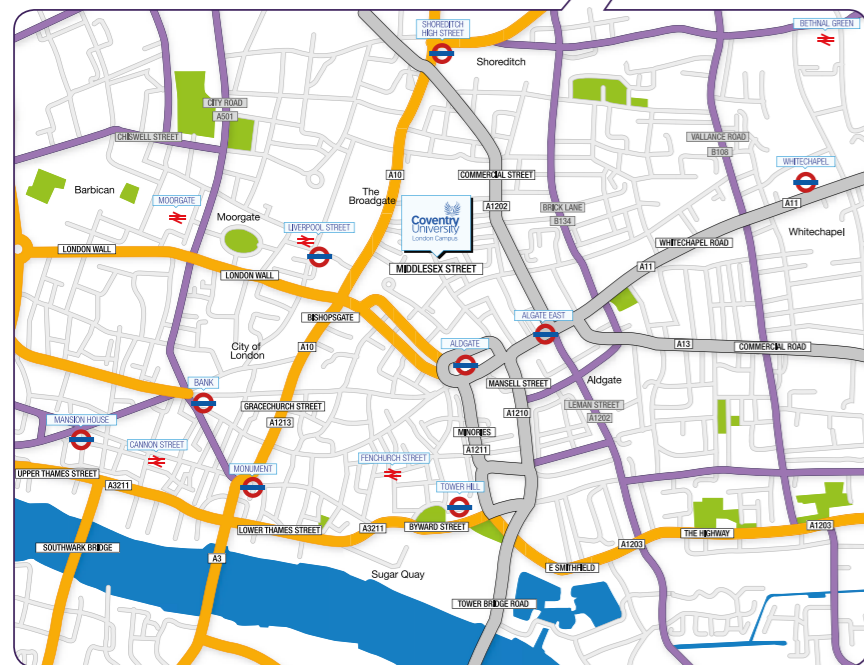
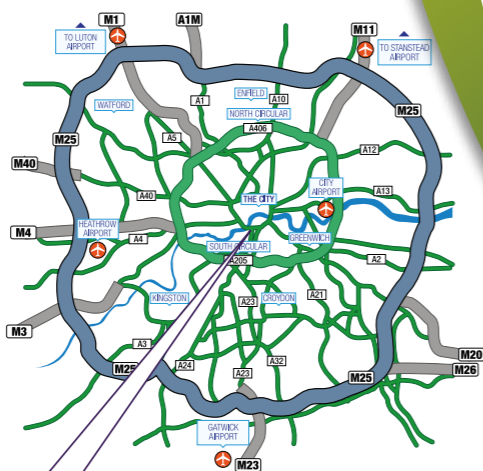
# Living in London

London is a unique and exciting place to study and live. From famous sights, museums and theatres to fashion, restaurants and shopping, it's packed with ways for you to get the most out of your time here.

- Ranked 3rd in the world in *QS Best Student Cities 2015*
- Incredibly well-connected, with five international airports and the high-speed Eurostar rail link
- Globally renowned tourist attractions and four World Heritage Sites
- Fantastic transport system will enable you to get around the city quickly and easily.

## Campus location

Coventry University London Campus is located in the centre of London's financial district, just a few minutes walk from Liverpool Street station. You will also be surrounded by the many theatres, museums and galleries that contribute to the rich heritage of the capital.



# Student Life

## Activities

### Social activities

The Student Services team organises a range of trips and activities throughout the year. For international students this is an ideal way to see more of the UK and experience British culture. Previous trips have included Thorpe Park theme park, Windsor, Eton, the Isle of Wight and an Oxford day trip. Visits have also been organised to Paris, Amsterdam and Brussels.

### Clubs and societies

Joining various student-run clubs and societies is a great way to learn new skills and make friends. As a student at Coventry University London Campus you can also join the University of London Union (ULU) as an Associate Member of ULU. With the membership, you will be able to use many of the Union's facilities and services such as the on-site gym and health club, study facilities as well as the various clubs and societies available.

### Sports facilities

The University is just 15 minutes' walk from SPACe (Sports and Performing Arts Centre). As a member you can play football, volleyball, basketball and badminton. There is also a well-equipped gym.

### Places of worship

London is one of the most multicultural cities in the world and it is easy to find places of worship locally.

### Food

Supermarkets and restaurants in London cater for a wide range of needs and tastes. Cuisine from all around the world can be easily found.

### Shopping

London is world famous for its shopping. You can experience Europe's busiest shopping street, Oxford Street, and find world-famous stores such as Liberty and Hamleys on nearby Regent Street. There is also fantastic shopping available in Kensington and Chelsea, and a visit to Harrods in Knightsbridge is a must.

The Student Services team organises a range of trips and activities throughout the year. This is an ideal way to see more of the UK and **experience British culture**



## Accommodation

London is an exciting city to live with a variety of high-quality and affordable accommodation for International Study Centre students to choose from. We offer accommodation in two residencies, Magenta House and Blithehale Court, which are well equipped and designed to give you the ultimate living experience in London.

### Magenta House

Magenta House is situated in a fantastic central location near fashionable Spitalfields just 5 minutes' walk from Aldgate East Underground station. It is also conveniently located close to the Coventry University London Campus, shops, boutiques, cafes and restaurants.

### Blithehale Court

Blithehale Court is in an excellent East London location in Bethnal Green close to a wide range of bars, restaurants and shops. Bethnal Green is a vibrant young area, and is home to many artists, musicians, designers and students from local universities. Coventry University London campus is just two stops away on the underground.

### Both accommodation options benefit from:

- Studios with your own kitchen/living area or shared apartments with shared kitchen with fridge-freezer, cooker and microwave
- Ensuite shower room
- Bills (electricity, water, gas, broadband and contents insurance) included in the rent
- Common rooms
- Electronic key access, 24-hour CCTV and on-site staff
- Secure bicycle storage
- On-site launderette.

## Student Support

Coventry University London Campus recognises that for many of their students living away from home is a new experience. Our friendly staff will be available to answer your questions when you arrive on campus and throughout your studies.

The Coventry University London Campus experience begins with a formal induction and orientation programme. Staff will be on hand to give you advice on matters such as accommodation, opening a bank account, joining clubs and going on trips.

The Campus has a dedicated Academic and Student Services team that offers ongoing advice to all international students. We also have a dedicated Employability Team that focuses on building industry links and preparing you for placements.

# International Study Centre

The Coventry University London Campus International Study Centre (ISC), based in the centre of London, provides international students with a direct route onto a range of degrees at the University.

Our programmes consist of academic modules, study skills and English language training to ensure that you have the skills to succeed when you progress onto your chosen degree programme.

At Coventry University London Campus ISC you can choose between three programmes depending on your skills, academic background and age:

- **International Foundation Year**  
Business, Management, Accounting and Finance
- **International Year One**  
Business, Management, Accounting and Finance
- **Pre Masters Programme**  
Business, Management, Accounting and Finance

## A taste of university life

ISC programmes will introduce you to the style of teaching and learning that you will experience when you progress onto your degree. You will learn via one-to-one tutorials, small seminars and as part of larger lecture groups.

## Access to world-class facilities

As well as studying at our well-equipped centre, you'll also have access to an extensive range of facilities on campus, including the library and state-of-the-art subject resources.

By the end of your chosen programme you will be fully prepared for degree study and have the skills you will need to succeed at the University.



**Coventry University London Campus has offered me a wonderful chance to learn about working in a diverse, multi-cultural environment.**

Jaheda from Bangladesh  
MBA Global Financial Services

## International Foundation Year

The International Foundation Year is a three-term programme of academic subjects, study skills and English language training that is designed to help international students succeed in a UK classroom environment and meet the entry requirements for undergraduate study.

### Key facts

#### Entry dates:

October or February

#### Course length:

Three terms

#### Academic entry requirements:

Good high school graduation grades or equivalent academic study

#### English language:

IELTS 4.5 overall (with 4.0 in writing) or equivalent

#### Age:

Students are usually at least 17 years old



Designed to help international students succeed in a UK classroom environment and meet the entry requirements for undergraduate study.

## International Year One

The International Year One is an intensive, three-term programme of academic subjects, study skills and English language training that is designed for international students. The course is equivalent to the first year of an undergraduate degree. It leads to the second year of your chosen degree.

### Key facts

#### Entry dates:

October or February

#### Course length:

Three terms

#### Academic entry requirements:

Completion of secondary school plus one year of further study

#### English language:

IELTS 5.0 overall (with 5.0 in writing) or equivalent

#### Age:

Students are usually at least 18 years old



Designed for international students, the course is equivalent to the first year of an undergraduate degree.

## Pre-Master's Programme

The Pre-Master's Programme is a two-term programme of academic subjects, study skills and English language training that is specifically designed to meet the needs of international students. You will gain the specialist skills and knowledge you need to succeed in your Master's degree.

### Key facts

#### Entry dates:

October or February

#### Course length:

Two terms

#### Academic entry requirements:

For more information, including term dates, country-specific entry requirements and tuition fees, visit [coventry.ac.uk/londoncampus/isc](http://coventry.ac.uk/londoncampus/isc)

#### English language:

IELTS 5.5 (minimum of 5.5 in all skills)

#### Age:

Students must be at least 20 years old



Students will gain the specialist skills and knowledge they need to succeed in their Master's degree.



# International Study Centre Programmes

## International Foundation Year in Business, Management, Accounting and Finance

You will study the following modules during the International Foundation Year Programme:

- English Skills for Academic Study (ESUS)
- Personal Learning and Thinking Skills (PLTS)
- Investigating Business
- The Competitive Business Environment
- Legal and Financial Environment

Once you successfully complete the programme and achieve the required grades, you can enter the first year of your chosen undergraduate degree at the Coventry University London Campus.

## International Year One in Business, Management, Accounting and Finance

You will study the following modules during the International Year One Programme:

- English Skills for Academic Study (ESUS)
- Financial Environment
- Introduction to Marketing
- International Business Culture
- Markets and Marketing
- Organisational Behaviour

Once you successfully complete the programme and achieve the required grades, you can join the second year of your chosen undergraduate degree at the University.

## Pre-Master's Programme in Business, Management, Accounting and Finance

You will study the following modules during the Pre-Master's Programme:

- English and Skills for University Study
- Economics and Financial Analysis
- Research and Quantitative Methods
- Strategic and Operations Management

These modules have been specially designed to fully prepare international students for the challenges of a taught Master's degrees at Coventry University London Campus. Once you successfully complete the programme and achieve the required grades, you will go on to study your chosen postgraduate degree at the University.



## Progression degrees

### International Foundation Year:

- BA (Hons) Global Business Management**
- BA(Hons) International Fashion Management and Marketing\***
- BA (Hons) International Finance and Accounting**
- BA (Hons) International Hospitality and Tourism\***

### International Year One:

- BA (Hons) Global Business Management**
- BA (Hons) International Finance and Accounting**

Coventry University London Campus' highly practical degrees aim to fully prepare graduates for the world of work and make them highly attractive to employers globally.

### The degrees offer opportunities to:

- Undertake work-related activities with industry experts
- Develop the knowledge and skills to operate successfully in the contemporary global business environment
- Connect with a wide range of business organisations in London and internationally
- Study abroad and undertake placement and workplace projects.

\*Subject to validation



## Progression degrees

- MSc Global Finance\***
- MSc Global Financial Trading**
- MSc International Fashion Marketing**
- MSc International Hospitality and Tourism**
- MSc Professional Accounting\***
- MBA Global Business\*\***
- MBA Global Energy and Sustainability Management\***
- MBA Global Financial Services\*\***
- MBA International Fashion Management**
- MBA International Human Resource Management\***
- MBA International Marketing\*\***
- MBA Oil and Gas Management\*\***

Master's degrees at Coventry University London Campus are taught at the highest standard by expert practitioners.

### The programmes offer:

- Networking opportunities with peers
- Access to the very best professional development
- The opportunity to attend industry exhibitions and seminars
- Guest speakers from the industry
- Business start-up advice and support
- Work-related activities and lectures from high-profile business figures.

\*Subject to validation

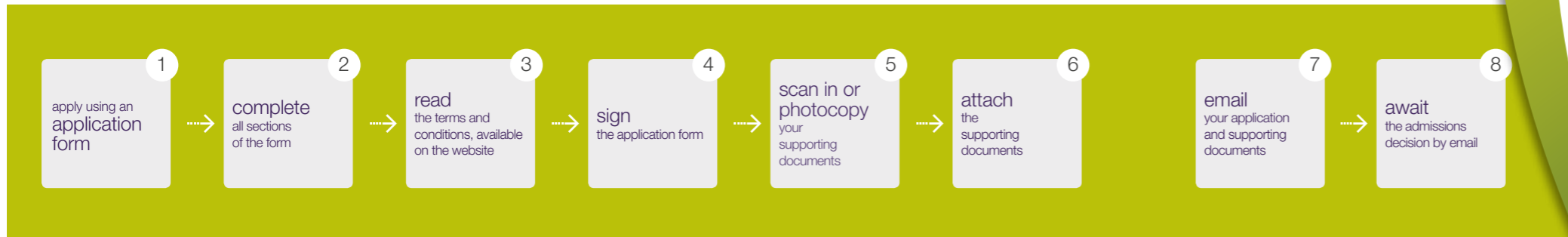
\*\*October intake is also available

Progression degrees and grades required for all of our programmes are subject to change. For the latest information, visit our website.

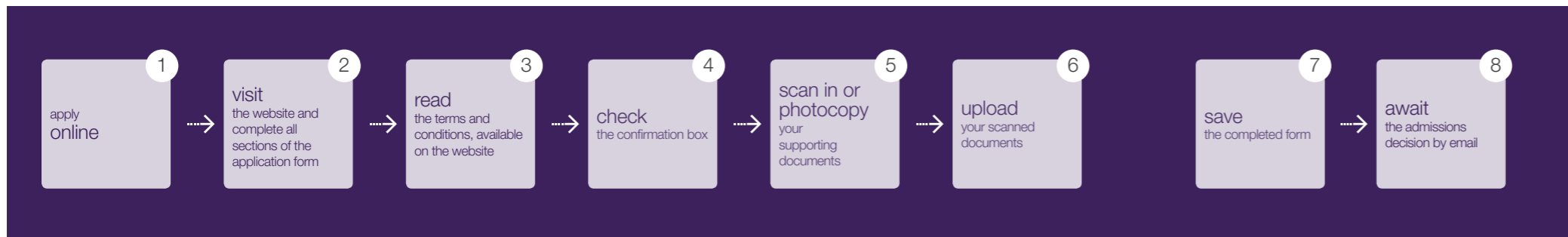
# How to Apply

You can apply to the Coventry University London Campus International Study Centre through your local education agent or directly via our website. Whichever option you choose, we are available to help at every stage.

## Apply via your local agent



## Apply online



## How to contact the International Study Centre

### By the enquiry form on our website:

[www.coventry.ac.uk/londoncampus/isc](http://www.coventry.ac.uk/londoncampus/isc)

### By telephone:

+44 (0)1273 339333 (omit the zero if you are dialling from outside the UK).

Our Student Enrolment Advisers speak a variety of languages, and understand several more. We will do our best to contact you in your preferred language.

### If you are applying via a local agent:

Please contact your agent if you have any questions.

## Student Insurance

It is essential that international students have the protection of personal insurance whilst in the UK. To cover you as a student at the International Study Centre (ISC), you can purchase 'Study Care'. This policy will cover you for loss of personal possessions, travel delay, as well as providing medical insurance until the end of your ISC academic programme. You can either purchase Study Care Insurance as part of your application process, or provide proof of alternative adequate insurance cover. For more information, please visit [www.coventry.ac.uk/londoncampus/isc](http://www.coventry.ac.uk/londoncampus/isc)

## About these programmes

Coventry University London Campus International Study Centre and its programmes are provided by Study Group in collaboration with the Coventry University London Campus.

Over 50,000 students from 145 countries trust Study Group to provide life-changing learning experiences every year. With over 20 years' experience, our international programmes help you to bridge the academic, cultural and language gap between where you are, and where you wish to be.

## Disclaimer

This brochure is issued for the general guidance of students considering entry to the Coventry University London Campus International Study Centre from September 2015.

The information is correct at the time of going to press and the programmes and services described herein are those which Study Group is planning to offer. However, Study Group reserves the right, to amend, add or remove any programme and/or services set out in this brochure and/or the timetable, delivery, content syllabus and assessment of such programmes. Courses offered in this prospectus are subject to approval by the University.

The University (where applicable) also reserves the right to amend the regulations governing those programmes without prior notice. Study Group therefore strongly recommends that immediately prior to making any application to Study Group or accepting any offer from Study Group students should refer to the most up-to-date version of the programme descriptions and specifications and the regulations on the Coventry University London Campus International Study Centre website.

Study Group also reserves the right to make variations to the contents and methods of delivery of the programmes and services, to discontinue programmes and services and/or to combine and merge programmes, if such action is reasonably considered to be necessary by Study Group.

Applicants to Study Group programmes will be notified as soon as practicable of any material changes likely to have a bearing on their application, such as cancellation of, or major modification to programmes offered, changes to accommodation provision or fees and charges to be levied where applicable.

Neither the University nor Study Group shall be liable for any errors or omissions that may be contained.

To apply, or for further information,  
please contact

Coventry University London Campus ISC  
Admissions Centre, 1 Billinton Way  
Brighton, BN1 4LF, United Kingdom  
[www.coventry.ac.uk/londoncampus/isc](http://www.coventry.ac.uk/londoncampus/isc)

